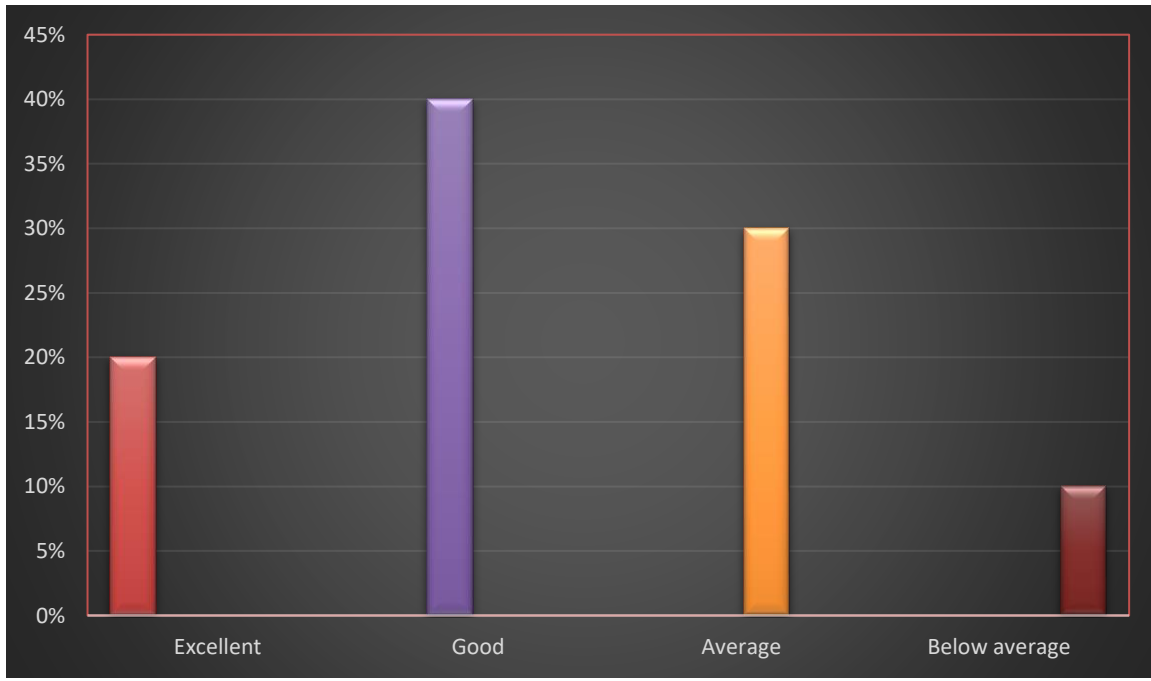


# FEEDBACK 2015-2016

## ASSESSMENT OF STUDENTS ABOUT THE COLLEGE

No. of parameters given for evaluation = 23

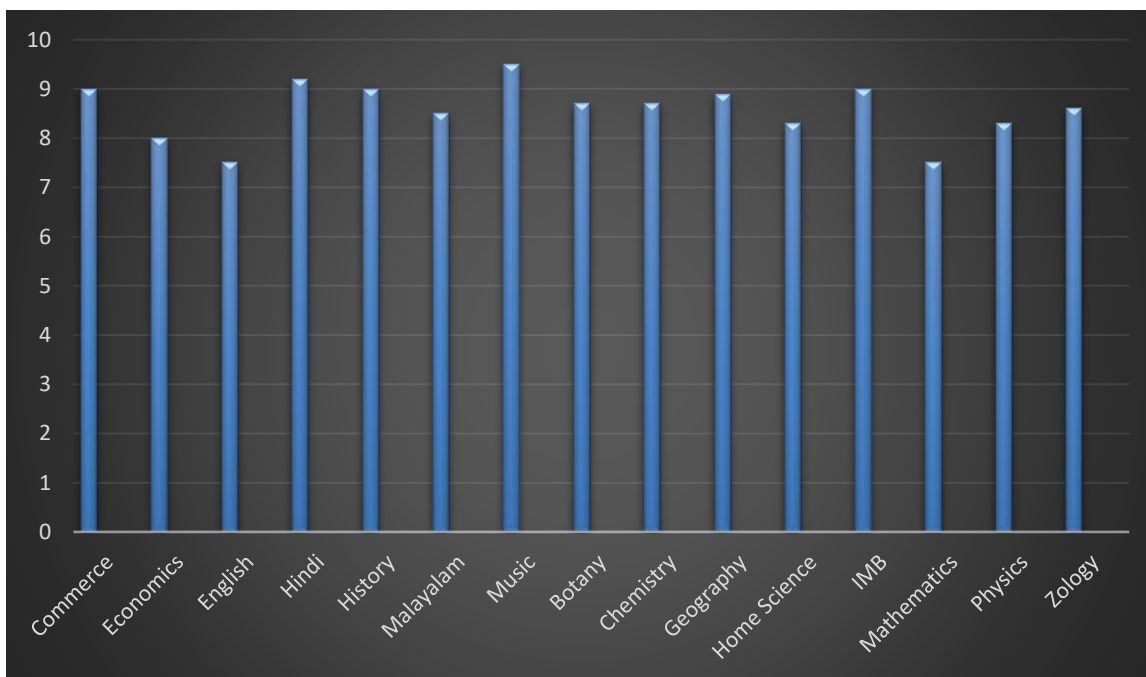
1. Encouraging academic pursuit
2. Club and Extension activities
3. General library
4. Discipline enforcement
5. Recreational activities
6. Canteen and other facilities
7. Toilet facility
8. Team work
9. Teacher-student relationship
10. Tapping External Resources
11. Remedial Teaching
12. Personal help
13. Help in career guidance
14. Maintenance work
15. Office assistance
16. Functioning of PTA
17. Guidance and assistance from seniors
18. Grievances redress mechanism/ handling of complaints
19. Activities of the college union
20. Sports promotion
21. Conveyance of essential information
22. Promoting institutional loyalty
23. Your overall experience



# **ASSESSMENT OF STUDENTS ABOUT THE DEPARTMENTS**

No. of parameters given for evaluation = 19

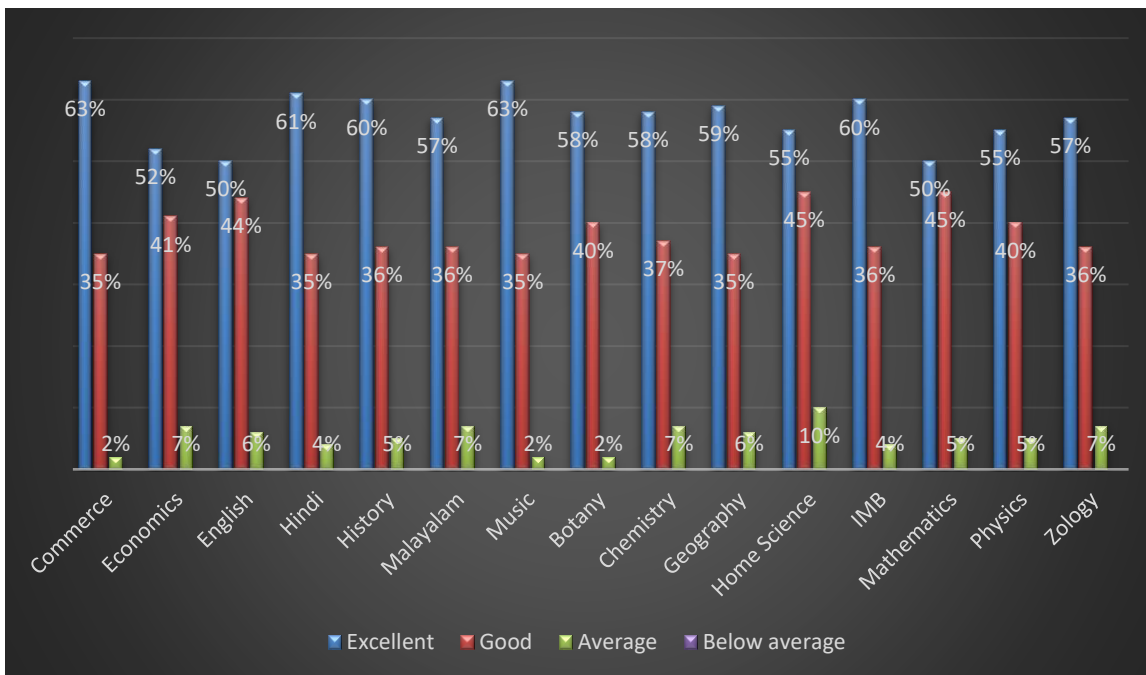
1. Coverage of topics
2. Approachability
3. Creating general awareness
4. Discipline enforcement
5. Laboratory facilities
6. Library facilities
7. Personal help
8. Help in extra-curricular activities
9. Teacher student relationship
10. Team work
11. Tapping external resources
12. Extension activities
13. Remedial teaching
14. Help in career guidance
15. Promptness in daily communication
16. Conduct of tests and its evaluation
17. Organization within the department
18. Parent interaction
19. Your overall experience



## ASSESSMENT OF STUDENTS ABOUT THE TEACHERS

No. of parameters given for evaluation = 17

- |  |   |
|--|---|
| <ol style="list-style-type: none"> <li>1. Punctuality and regularity</li> <li>2. Coverage of topics</li> <li>3. Sincerity</li> <li>4. Communication skills</li> <li>5. Method of teaching</li> <li>6. Encouraging student participation in class</li> <li>7. Approachability</li> <li>8. Discipline enforcement</li> <li>9. Personal help</li> </ol> | <ol style="list-style-type: none"> <li>10. Help in extra-curricular activities</li> <li>11. Nature and character</li> <li>12. Teacher-student relationship</li> <li>13. Remedial teaching</li> <li>14. Help in career guidance</li> <li>15. Conduct of tests and its evaluation</li> <li>16. Finding alternate arrangements- when not available</li> <li>17. Your overall experience</li> </ol> |
|--|---|



**SREE NARAYANA COLLEGE FOR WOMEN KOLLAM**

**STUDENT FEEDBACK FORM - COLLEGE**

Department \_\_\_\_\_ Class \_\_\_\_\_ Academic Year \_\_\_\_\_

Assess your **COLLEGE** based on the following parameters by putting a tick-mark in the appropriate column.

Sl. No.	Parameters	Excellent	Good	Average	Below Avg	Poor
1.	Encouraging academic pursuit					
2.	Club and Extension activities					
3.	General library					
4.	Discipline enforcement					
5.	Recreational activities					
6.	Canteen and other facilities					
7.	Toilet facility					
8.	Team work					
9.	Teacher-student relationship					
10.	Tapping External Resources					
11.	Remedial Teaching					
12.	Personal help					
13.	Help in career guidance					
14.	Maintenance work					
15.	Office assistance					
16.	Functioning of PTA					
17.	Guidance and assistance from seniors					
18.	Grievances redress mechanism/ handling of complaints					
19.	Activities of the college union					
20.	Sports promotion					
21.	Conveyance of essential information					
22.	Promoting institutional loyalty					
23.	Your overall experience					

**SREE NARAYANA COLLEGE FOR WOMEN KOLLAM**

**STUDENT FEEDBACK FORM - DEPARTMENT**

Department \_\_\_\_\_ Class \_\_\_\_\_ Academic Year \_\_\_\_\_

Assess your **DEPARTMENT** based on the following parameters by putting a tick-mark in the appropriate column.

Sl. No.	Parameters	Excellent	Good	Average	Below Avg	Poor
1.	Coverage of topics					
2.	Approachability					
3.	Creating general awareness					
4.	Discipline enforcement					
5.	Laboratory facilities					
6.	Library facilities					
7.	Personal help					
8.	Help in extra-curricular activities					
9.	Teacher student relationship					
10.	Team work					
11.	Tapping external resources					
12.	Extension activities					
13.	Remedial teaching					
14.	Help in career guidance					
15.	Promptness in daily communication					
16.	Conduct of tests and its evaluation					
17.	Organization within the department					
18.	Parent interaction					
19.	Your overall experience					

**SREE NARAYANA COLLEGE FOR WOMEN KOLLAM**

**STUDENT FEEDBACK FORM - TEACHER**

Department \_\_\_\_\_ Class \_\_\_\_\_ Academic Year \_\_\_\_\_

Assess your **TEACHER** based on the following parameters by putting a tick-mark in the appropriate column.

Sl. No.	Parameters	Excellent	Good	Average	Below Avg	Poor
1.	Punctuality and regularity					
2.	Coverage of topics					
3.	Sincerity					
4.	Communication skills					
5.	Method of teaching					
6.	Encouraging student participation in class					
7.	Approachability					
8.	Discipline enforcement					
9.	Personal help					
10.	Help in extra-curricular activities					
11.	Nature and character					
12.	Teacher-student relationship					
13.	Remedial teaching					
14.	Help in career guidance					
15.	Conduct of tests and its evaluation					
16.	Finding alternate arrangements-when not available					
17.	Your overall experience					

**SREE NARAYANA COLLEGE FOR WOMEN KOLLAM**

**PARENTS FEEDBACK FORM**

Please fill this form carefully with necessary details based on your own experience and the experience of your child/ward at Sree Narayana College for Women, Kollam. The information you provide is intended to improve the quality of education provided by the college and will be treated as strictly confidential.

Class of Child/Ward \_\_\_\_\_ Subject/Main \_\_\_\_\_

Please rate the following features from 1 to 9:

Sl. No.	Parameters	Excellent	Good	Average	Below Avg	Poor
1.	Infrastructure and facilities for academic work					
2.	Teaching and teachers					
3.	Library					
4.	Canteen					
5.	Office					
6.	Laboratory					
7.	General atmosphere of the campus					
8.	Discipline					
9.	Security					

- Has your child ever expressed dissatisfaction with any of the facilities for academic activity?  
YES / NO

If yes, what was the reason?

---

- Has your child experienced any kind of difficulty with the teachers or teaching?  
YES / NO

If yes, state the problem

---

- Is she satisfied with the library facility available in the college?

- YES /NO

- If no, state the reason

---

- Is she satisfied with the services rendered by the College Office?
  - YES / NO
  - If no, state the problem.
- 

- How often do you usually visit the college?
  - Once in a year
  - Twice a year
  - Once or twice in three years
  - Never after securing admission
- Are you aware of your child/ward's attendance?  
YES / NO
- Would you support your child/ward being involved in student politics?  
YES /NO
- If you have any further suggestions, comments or complaints about the college, please state here in the space provided.

*Your feedback is very valuable to us and we sincerely hope you will visit the college as often as possible.*